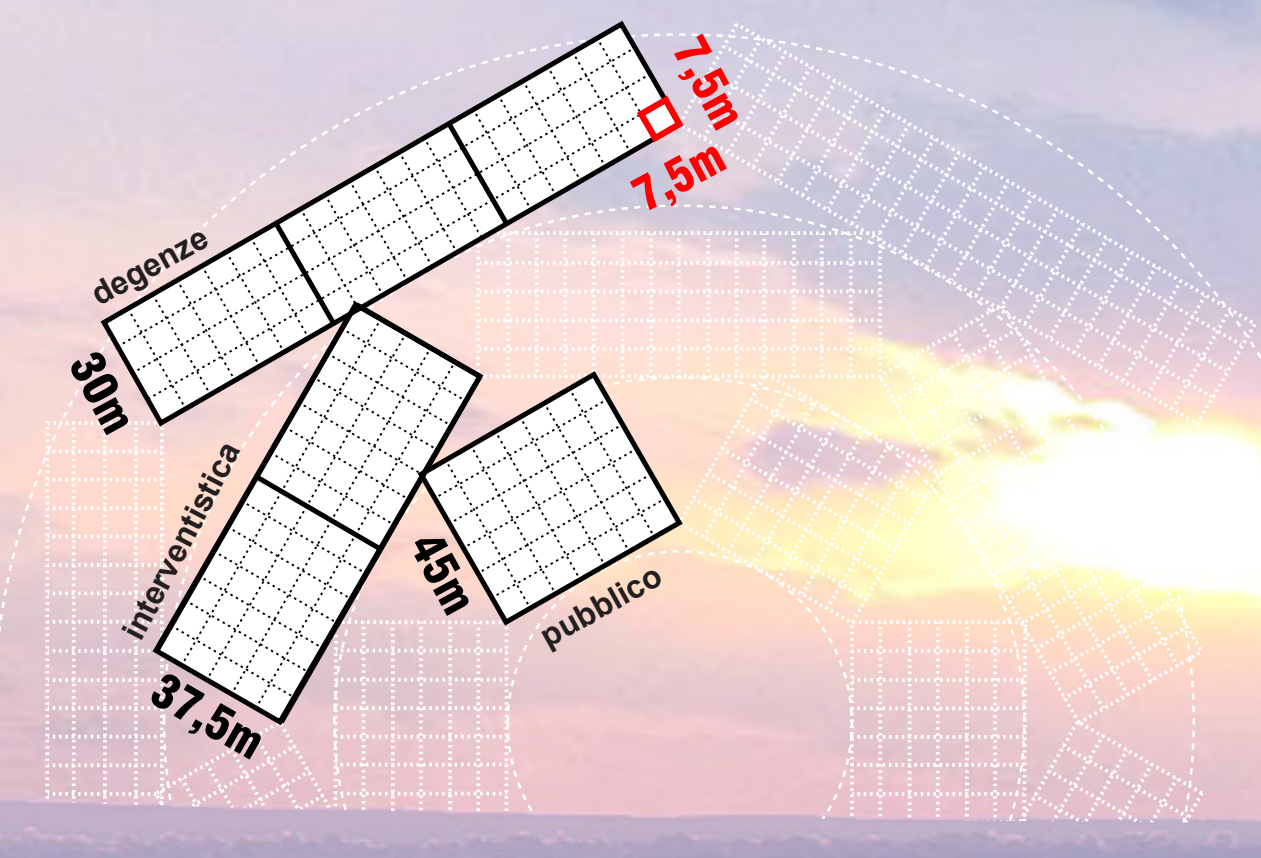
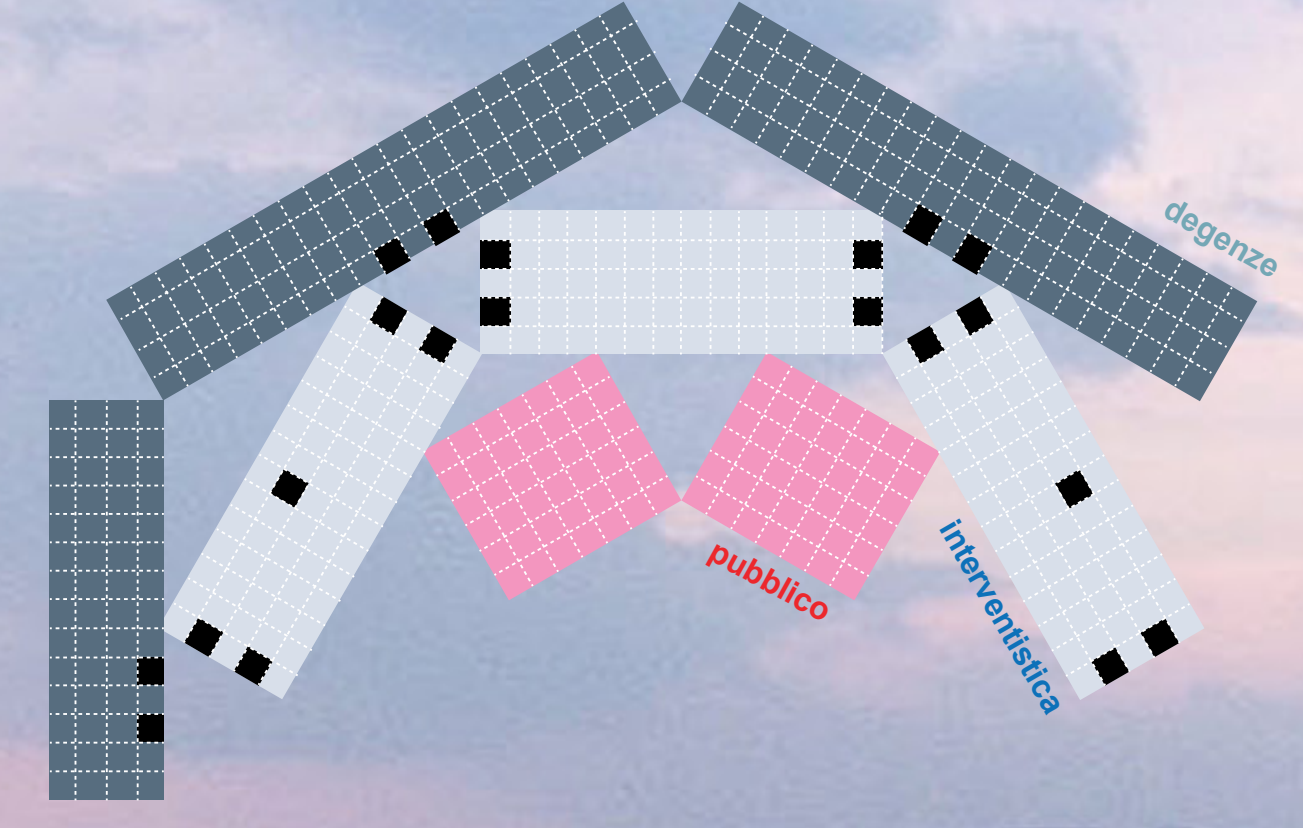


# curare e fiorire

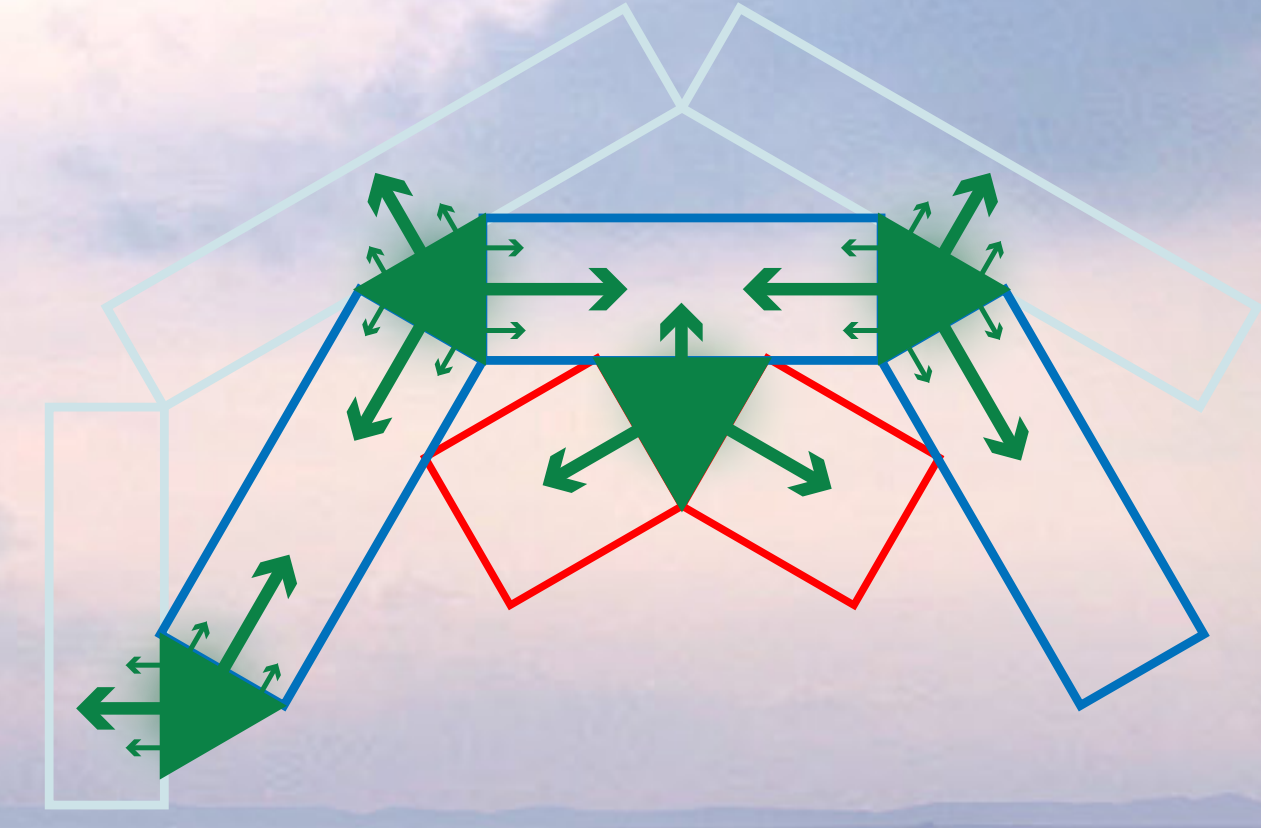
## 1. idea progettuale



1. griglia e dimensione ottimale



2. composizioni funzionali flessibili

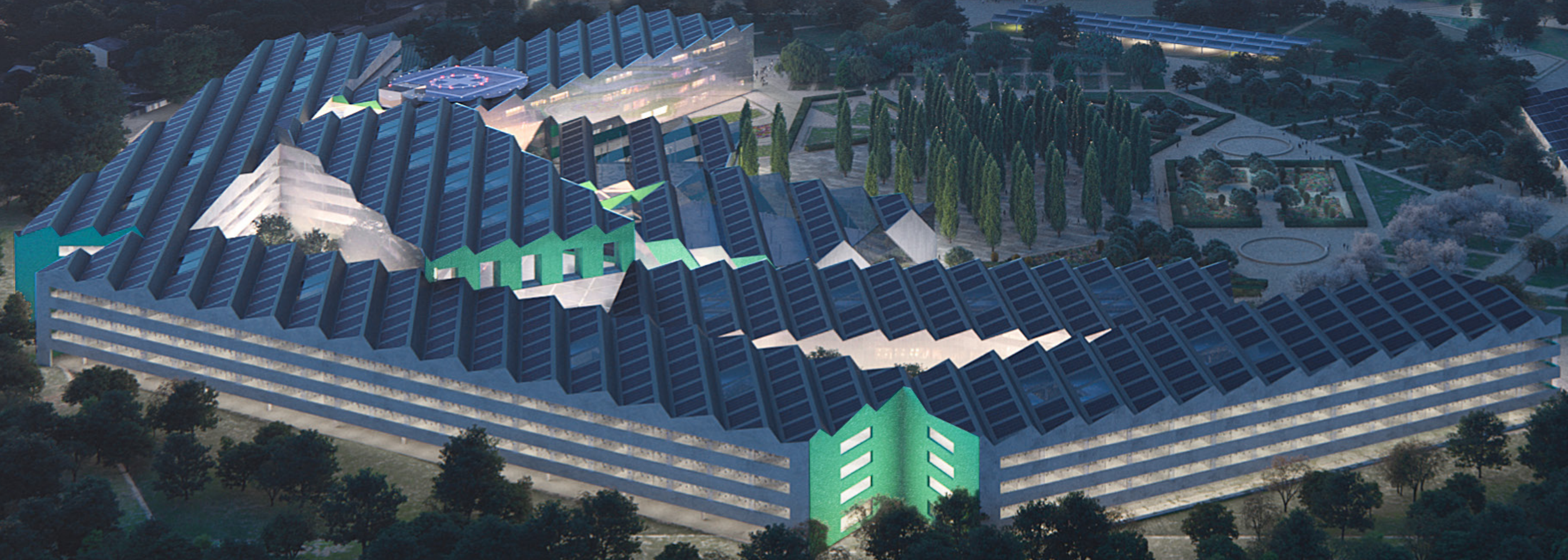


3. costellazioni distributive

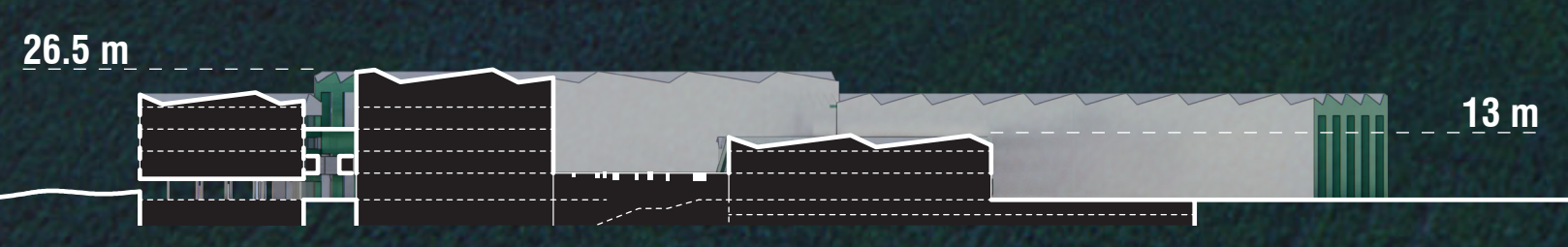


4. principio guida di un territorio urbano

planimetria di inserimento dell'intervento 1:2000



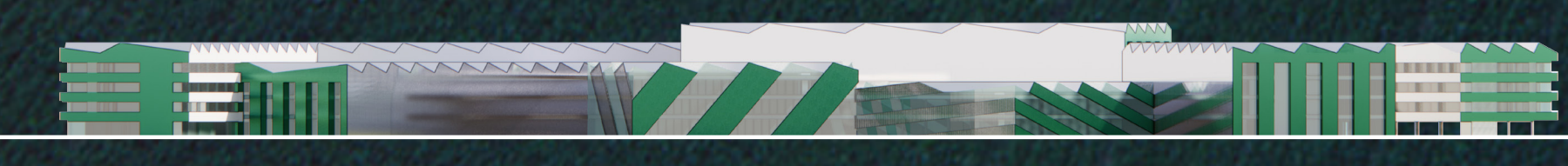
sezione urbana AA'



sezione urbana BB'



prospetto nord



prospetto sud



profili urbani 1:1500